



TRAVIS MANION  
FOUNDATION

"IF NOT ME, THEN WHO..."

# 9-11 HEROES RUN



**5K RUN/WALK/RUCK  
1-MILE RUN/WALK**

**J&J Campus  
Bldg 1000, US-202, Raritan, NJ  
Sept. 13 @ 9:00am**

NATIONAL PRESENTING SPONSOR



TRAVIS  
MANION  
FOUNDATION



**SMALL BUSINESS  
INSURANCE**

Learn more: [usaa.com/smallbusiness](https://usaa.com/smallbusiness)



SCAN TO REGISTER TODAY OR VISIT  
**[911HeroesRun.org/raritan](https://911HeroesRun.org/raritan)**

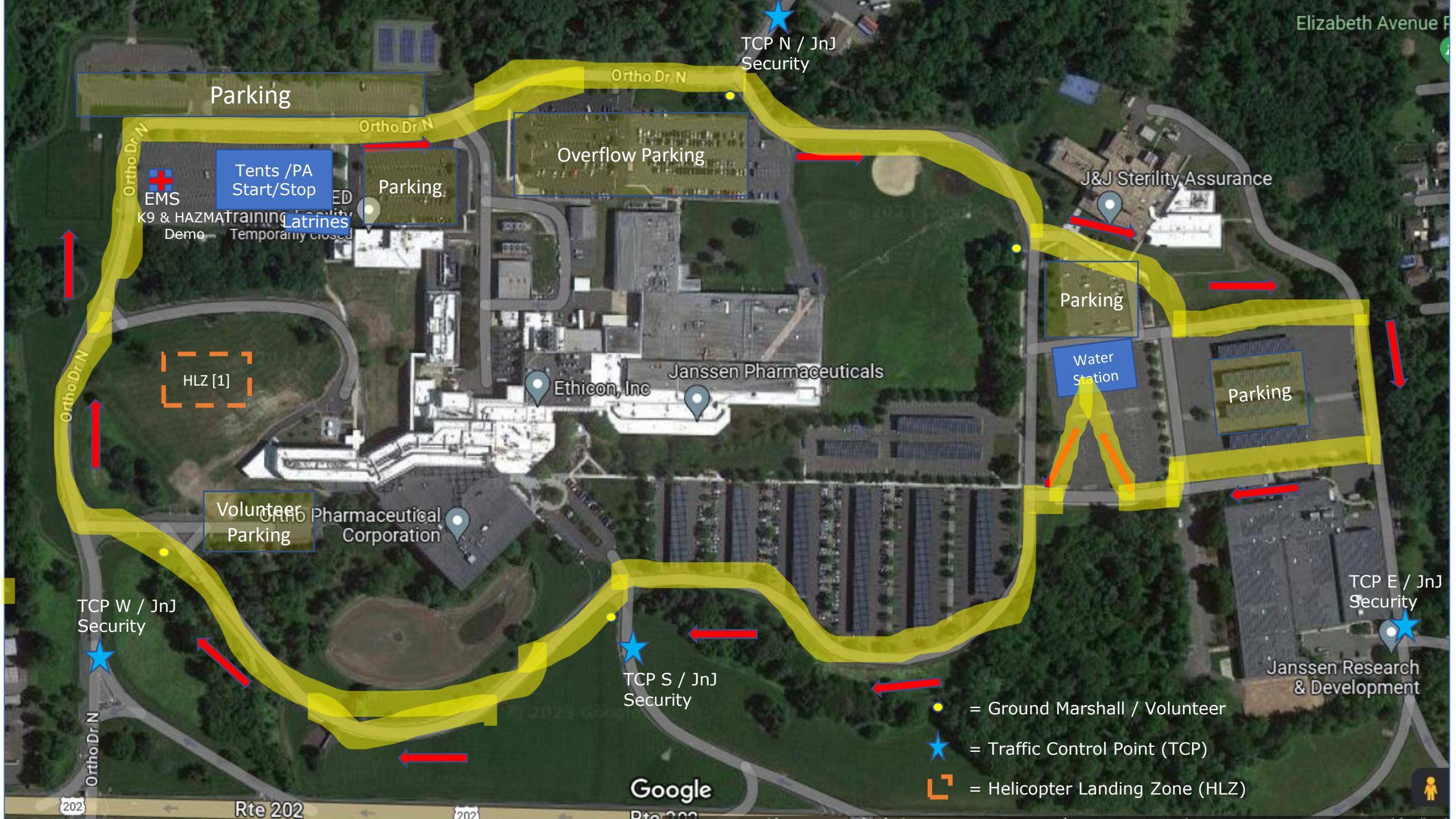
# Race Day Agenda

Volunteer Arrival	7:00 AM
Bib/Packet Distribution	7:30-8:30 AM
Welcome	8:30 AM
Pledge	8:35 AM
Star Spangled Banner	8:40 AM
Race Start	9:00 AM
Race Awards Ceremony	10:15 AM
K-9 & HAZMAT Demos & Helicopter Tour	11:00 AM
Close	11:30 AM

# IMPORTANT NOTES

1. All Entrances into site will be closed by 8:30am except for TCP N.
2. Parking lot at HLZ [1] is not for parking! Helicopter will be landing there for the tour after the race!
3. NO Dogs are allowed on site
4. All 1 Mile Walkers will do only 1 lap around the course. 5K Runners/Ruckers will do 2 laps.
  1. If you want to change your event, let us know before the race!
  2. 1 Mile course is ~1.5 miles
5. Park only in designated Parking Zones!
  1. If you must leave prior to 10:15, park at the CDC Daycare lot!
    1. See slide 4 for location.
6. Have Fun!
7. In case of Delays or Cancellation, look to our [Facebook](#) page and your email inbox.





Elizabeth Avenue P

TCP N / JnJ Security

Parking

Ortho Dr N

Ortho Dr N

Overflow Parking

Tents / PA Start/Stop

Parking

EMS

K9 & HAZMAT training Demo - Temporarily closed

Latrines

J&J Sterility Assurance

Parking

Water Station

Parking

HLZ [1]

Ethicon, Inc

Janssen Pharmaceuticals

Volunteer Parking

Pharmaceutical Corporation

TCP W / JnJ Security

TCP S / JnJ Security

TCP E / JnJ Security

Janssen Research & Development

● = Ground Marshall / Volunteer

★ = Traffic Control Point (TCP)

□ = Helicopter Landing Zone (HLZ)

Google

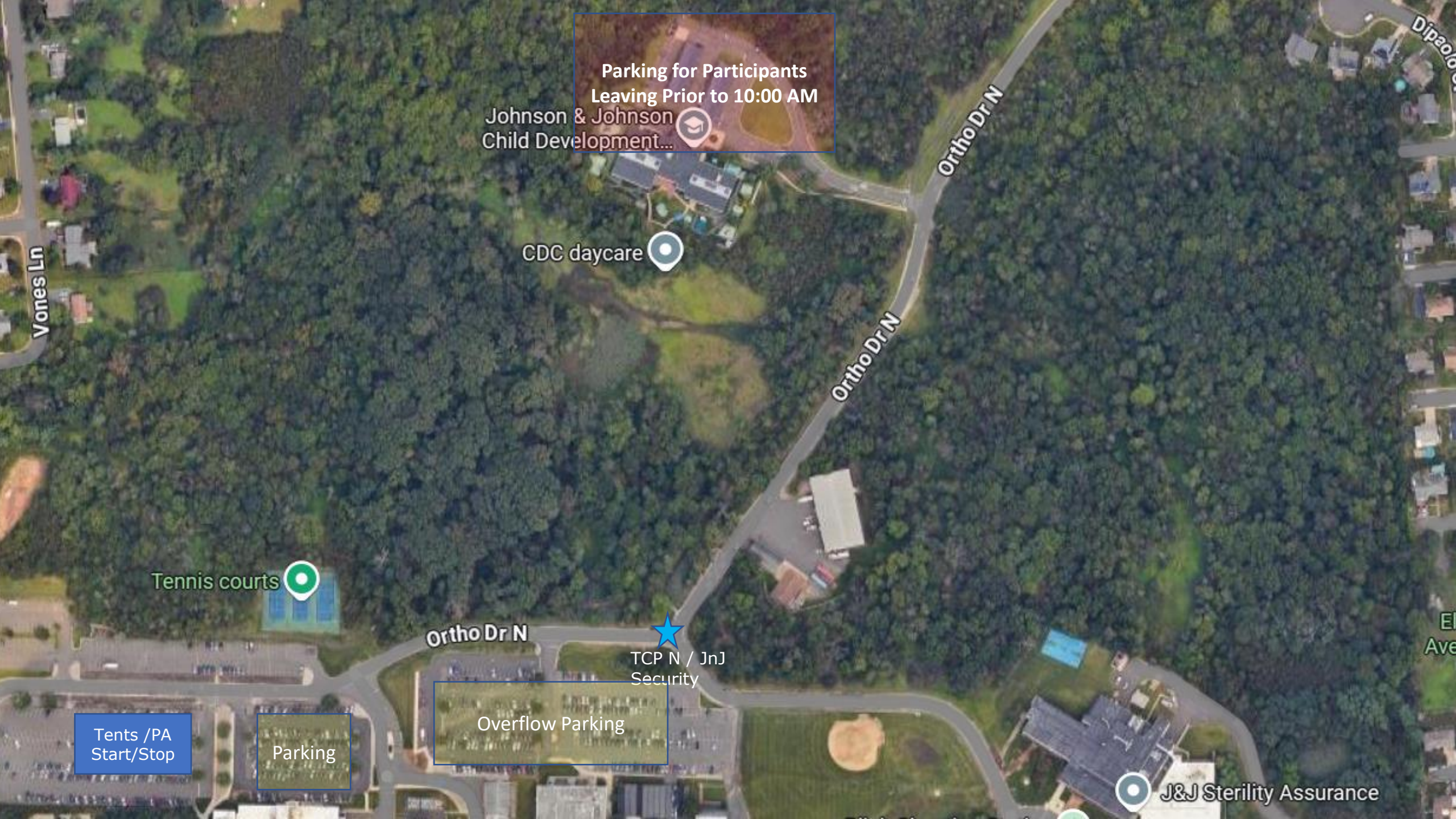
Rte 202

Rte 202

202

202





Parking for Participants  
Leaving Prior to 10:00 AM

Johnson & Johnson  
Child Development...

CDC daycare

Tennis courts

Ortho Dr N

TCP N / JnJ  
Security

Overflow Parking

Tents /PA  
Start/Stop

Parking

J&J Sterility Assurance



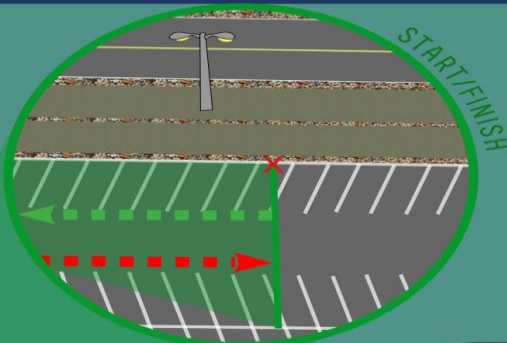
Start: 40° 34' 43.25", -74° 39' 12.00"

In Northwest parking lot heading West

19'8" East of the central light pole

Centered in the parking slot that is the 20<sup>th</sup> spot from the East and the 22<sup>nd</sup> spot from the West

Finish: Same as Start, approaching from the West



# RARITAN/BRIDGEWATER NJ 9/11 HEROES RUN 5kilometer ≈3.106mile Raritan, New Jersey

40°34'43.25", -74°39'12.00"

## Notes:

Route line represents measurement along the Shortest Possible Route  
Notations are in relation to the runner's direction of travel  
This Official Course Map may not be altered  
Runner has full access to the course route  
Measurement assumes a single runner  
Mile locations are not certified  
Course consists of two loops  
Map is not to scale

N



Ortho Dr. N.

Begin 2<sup>nd</sup>  
loop

Mile 3: 40°34'39.78", -74°39'15.95"

On Ortho Dr. North heading North  
21' after "STOP" sign

Mile 2: 40°34'40.87", -74°38'46.54"

Centered on 1<sup>st</sup> parking island in front of  
930 West building

T/A: 40°34'37.84", -74°38'46.97"

Approaching from the South,  
traveling counter-clockwise  
around a point that is:  
9'6" South of light pole  
At the north end of the  
6<sup>th</sup> parking spot  
from island

TURNAROUND

Mile 1: 40°34'39.78", -74°39'15.95"

On Ortho Dr. South heading West  
21' after "STOP" sign

Elevation

Start/Finish  
160'/49m

High  
171'/52m

Low  
137'/42m



Course Measured on

February 18<sup>th</sup>, 2025

Measurement & Map by:

Nathan J. Porch

nathan@getsetgoconsulting.com



Certified Course #  
NJ25001NP

Effective Dates:  
03/22/25  
through  
12/31/2035

