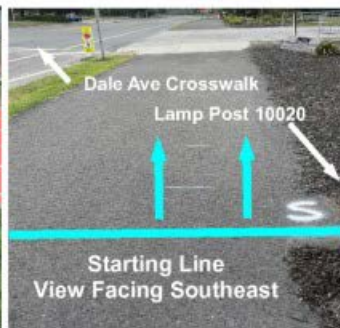
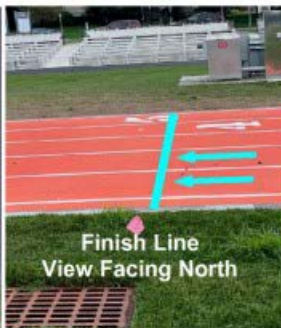


Cooper River Park 5k

Pennsauken, NJ

Mile Markers: **Start:** On N. Park Dr heading southeast, just west of Dale Ave across from house #14 Dale Ave, adjacent to lamp post #10020 which is on the south side of N Park in front of the picnic area. **Mile 1:** On S Park Dr 33' 6" east of lamp post #2611, east of Cerebral Palsy Adult Activity Center which is on the south side of S Park Dr. **Mile 2:** On concrete sidewalk just before the bridge 50' south of lamp post MA001107 at the start of the bridge, 3' 6" north of the north edge of CATV cast iron plate in the concrete. **Mile 3:** Heading east on the track, 17' west of the storm drain in the infield on the southeast end of the track. **Finish:** Heading west on the track in line with the western edge of the concrete pad for the electrical equipment and the eastern edge of the storm drain in the infield.

Course Description: Start by heading southeast on the park path next to N Park Dr. just before Dale Ave, right onto Cuthbert Blvd, right onto path next to S Park Dr, straight on the path to E Crescent Blvd bridge over Cooper River Lake, stay on the path as it bears to the right, to the parking lot entrance just before the track, right into the parking lot and quick left past the fence to the track, counter-clockwise around the track to the finish.



Notes and Restrictions: 1) The entire race takes place on the bike path except for the bridge and track portions. 2) The course was measured using the full width of the path and the shortest possible route. 3) All markers in white paint. Markers for Mile 3 and the Finish were sprayed in white paint on the curb on the inside of the track



USATF Certificate
NJ22036JLW
Effective: 08/29/2022
Through: 12/31/2032

